

1 **C.1 SCE AGENCY COMMUNICATIONS**

2 This appendix presents copies of correspondence (as of December 2004) between SCE and
3 regulatory agencies regarding the proposed Antelope Transmission Project.



Board of Supervisors County of Los Angeles

MICHAEL D. ANTONOVICH
SUPERVISOR

November 30, 2004

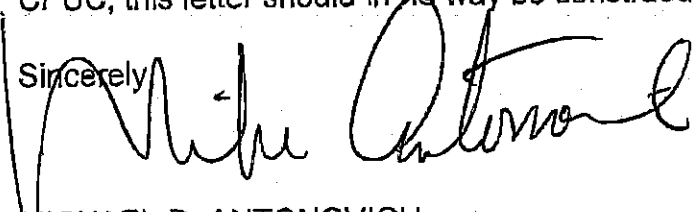
Mr. Robert K. Stiens
Project Manager
Southern California Edison
2244 Walnut Grove Avenue
Rosemead, CA 91770

Dear Mr. Stiens:

This letter will serve as confirmation that staff of Southern California Edison has met with my staff concerning the Antelope Transmission Project.

Because this project is in the early stages and will undergo a formal public review by the CPUC, this letter should in no way be construed as an endorsement of the project.

Sincerely,


MICHAEL D. ANTONOVICH
Supervisor

MDA:pno

23920 Valencia Blvd.
Suite 300
Santa Clarita
California 91365-2196
Website: www.santa-clarita.com

Phone
(661) 259-2489
Fax
(661) 259-8125



City of
Santa Clarita

November 24, 2004

Mr. Ernie Villegas
Regional Manager, Public Affairs
Southern California Edison
25625 W. Rye Canyon Road
Santa Clarita, CA 91355

Dear Mr. Villegas:

Thank you for taking the time to educate me on the Antelope Transmission Project. My understanding is that the California Public Utilities Commission (CPUC) has ordered Southern California Edison Company (SCE) to file applications with the CPUC requesting authorization to upgrade its existing transmission system.

While the City is excited about the possibility of wind-generated electricity being added to the grid, we also have concerns of how the additional electric towers will impact our residents' quality of life.

I encourage you to embark on a comprehensive public participation process with the residents of the City of Santa Clarita and particularly, the residents nearest the transmission lines.

Please continue to keep me informed as the Antelope Transmission Project program evolves.

Thanks again.

Sincerely,

Kenneth R. Pulsikamp
City Manager

KRP:CD:ss
\\Publicwork\1\dept\ADMIN\SC\AntelopeTransProj11-04.doc

cc: Chris Dasté, Field Services Director



City of Lancaster

44933 North Fern Avenue
Lancaster, California 93534-2461
661-723-6000



November 17, 2004

Frank C. Roberts
Mayor

Bishop Henry W. Hearn
Vice Mayor

Jim Jeffra
Council Member

Ed Sileo
Council Member

Andrew D. Visokey
Council Member

Alis Clausen
Southern California Edison
42060 10th Street West
Lancaster, CA 93534

Dear Ms. Clausen:

The City of Lancaster wants to thank you for taking the time to brief us on the proposed new electrical transmission facilities for which you will be submitting applications to the California Public Utilities Commission.

As you pointed out in your briefing, these transmission facilities will impact the City of Lancaster and areas under the City of Lancaster's sphere of influence; areas that will likely be annexed into the City's corporate limits in the future. The proposed projects, because of their paths through the City of Lancaster, are of concern to the City and we would request to be kept informed as your application proceeds through the Public Utilities Commission.

Again, thank you for sharing your information with us on November 1, 2004.

Sincerely,

DENNIS E. DAVENPORT
Acting City Manager

DED:tsc



PALMDALE

a place to call home

November 9, 2004

JAMES C. LEDFORD, JR.
Mayor

JAMES A. "JIM" ROOT
Mayor Pro Tem

MIKE DISPENZA
Councilmember

STEVEN D. HOFBAUER
Councilmember

RICHARD J. LOA
Councilmember

Ms. Alis Clausen
Southern California Edison
42060 10th Street West
Lancaster, CA 93534

RE: Antelope Transmission Project

Dear Ms. Clausen

This is in response to your letter regarding Southern California Edison's intent to build new electric transmission facilities within the City of Palmdale.

The proposed expansion of the Southern California Edison easement would primarily impact two existing developments; the City Ranch and Ritter Ranch Specific Plan areas. The expansion of facilities will impact areas currently designated for residential and open space development within the City Ranch Specific Plan if expanded to the southwest of the current easements; if expansion is to the northeast, it will impact areas designated for residential, open space and park development in addition to an elementary school. Within the Ritter Ranch Specific Plan area, land designated for residential, open space, park and commercial will be impacted by construction to the southwest of current easements; to the northeast residential, open space, park and a school site would be impacted. If the expansion is to the northeast of the current easements, several approved tentative tracts within the Ritter Ranch would be severely impacted. We recommend that discussions with each of these property owners commence as soon as possible.

Any expansion to the northeast within the remainder of the areas within the City limits would impact an existing entitlement located on the north side of Avenue M-8 between 70th and 75th Streets West. These areas are currently zoned for single family residential and light agricultural uses.

Auxiliary aids provided for

communication accessibility

upon 72 hours' notice and request.

Letter to Alis Clausen
Antelope Transmission Project
November 9, 2004
Page 2

Should you require any additional information, please contact Planning
Director Laurie Lile at (661) 267-5200.

Sincerely

A handwritten signature in black ink, appearing to read "Bob", written over the word "Sincerely".

Robert W. Toone, Jr.
City Manager

cc: Steve Williams
Laurie Lile

BOARD OF SUPERVISORS

SUPERVISORS

Jon McQuiston District 1
Don Maben District 2
Barbara Patrick District 3
Raymond A. Watson District 4
Pete H. Parra District 5



DENISE PENNELL
CLERK OF BOARD OF SUPERVISORS

Kern County Administrative Center
1115 Truxtun Avenue, 5th Floor
Bakersfield, California 93301
Telephone 661-868-3585
TTY Relay 800-735-2929

November 9, 2004

Ms. Alis Clausen
Southern California Edison
42060 10th Street West
Lancaster, CA 93534

Dear Ms. Clausen:

On November 9, 2004, the Kern County Board of Supervisors adopted the attached resolution supporting Southern California Edison's application to the California Public utilities commission for construction of the Antelope Transmission Project.

Increasing supplies of renewable energy is both consistent with California's adopted energy policy and vital to the future power needs of our state. Kern County has been home to a large potential source of renewable energy, wind power, for decades, and the Antelope Transmission Project will finally increase access to this electricity for California consumers.

The County looks forward to working with Southern California Edison to ensure that the project is completed as swiftly as possible and in compliance with all State, federal, and local laws.

Sincerely,

A handwritten signature in black ink that reads "Jon McQuiston". The signature is stylized and fluid.

Jon McQuiston, Chairman
Kern County Board of Supervisors

JM:ADKLEGGENsc Edison antelope clausen B
CF 300.30.50

cc: Planning Department
Richard Ritts

BEFORE THE BOARD OF SUPERVISORS

COUNTY OF KERN, STATE OF CALIFORNIA

In the matter of:

**SUPPORT FOR THE ANTELOPE
TRANSMISSION PROJECT**

Resolution No. 2004-411

Reference No. _____

I, DENISE PENNELL, Clerk of the Board of Supervisors of the County of Kern, State of California, hereby certify that the following resolution, on motion of Supervisor Parra, seconded by Supervisor Maben, was duly and regularly adopted by the Board of Supervisors of the County of Kern at an official meeting thereof on the 9th day of November, 2004, by the following vote and that a copy of the resolution has been delivered to the Chairman of the Board of Supervisors.

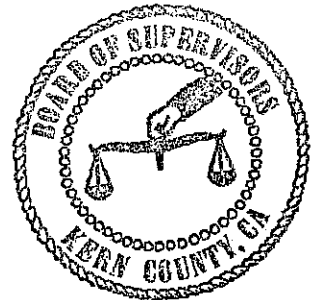
AYES: McQuiston, Maben, Watson, Parra

NOES: None

ABSENT: Patrick

DENISE PENNELL
Clerk of the Board of Supervisors
County of Kern, State of California

Judy A. Denny
Deputy Clerk



RESOLUTION

Section 1. WHEREAS:

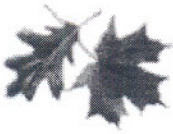
- (a) East Kern County and north Los Angeles County host many existing and proposed privately owned "wind farms" that generate electricity using wind-driven turbines; and

- (b) The California Public Utilities Commission (CPUC) has ordered Southern California Edison Company (SCE) to file applications with the CPUC in December 2004, requesting authorization to upgrade its existing transmission system; and
- (c) These system upgrades will be required to deliver the electricity projected to be generated by the current and proposed wind farms into the California power market; and
- (d) SCE is proposing to construct the Antelope Transmission Project in eastern Kern County and northern Los Angeles County to upgrade SCE's transmission system; and
- (e) If approved, this project would assist the development of wind generation and increase the supply of electricity generated by wind power for California electric consumers, which is an important component of the State of California's policy to increase the supply of renewable energy.

Section 2. NOW, THEREFORE, IT IS HEREBY RESOLVED by the Board of Supervisors of the County of Kern, State of California, as follows:

1. The Board of Supervisors expresses its support for construction of the proposed Antelope Transmission Project, provided it is approved by the California Public Utilities Commission and complies with State and federal laws and local ordinances.
2. Copies of this resolution shall be forwarded to the California Public Utilities commission and to Southern California Edison.

COPIES FURNISHED:
<i>CAD, Co. Counsel</i>
<i>Plan., CPUC</i>
<i>So. Cal. Edison</i>
<i>11-10-04 Jd</i>



Tracey Alsobrook/SCE/EIX
09/21/2004 10:04 AM

To dwight.deakin@edwards.af.mil
cc Terry Sciarrotta/SCE/EIX@SCE, James
Schaefle/SCE/EIX@SCE
bcc
Subject SCE Antelope Wind Power Route Info



FOR INTERNAL USE ONLY

Dwight,

Per our discussion this morning provided below are the proposed routes for our transmission lines to support increased generation of wind power in the region. The first attachment is the GIS layer with the proposed routes - if you have any problems with this data please contact Jim Schaefle directly either via e-mail or at (626) 302-9885. The second attachment is an overall map of the proposed project, and the third attachment is an AutoCAD drawing of different tower designs.

The particular tower designs we'll be using (including heights in feet) are as follows: single-circuit 500 kV from Pardee Substation to Antelope Substation (suspension towers 115', dead-end towers 137') with a possible alternative being double-circuit 500 kV towers (tower heights up to 189') out of Pardee Substation for a short distance ; Antelope Substation north to Cal Cement area single-circuit 500 kV (suspension towers 115', dead-end towers 137'); and single-circuit 220 kV from Cal Cement area to Monolith area (towers approx. 81').



quartermbuf_txml.zip general_location_map_08-06-2004.jpg tehach_towers.dwg

Please let me know if there is any additional data/information that we can provide to assist in your evaluation.

Thanks, Tracey

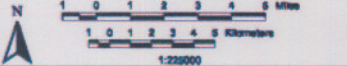
Tracey Alsobrook
Biologist
Southern California Edison
Environmental Consulting Services; Environment, Health and Safety
(626) 302-7547
PAX 27547



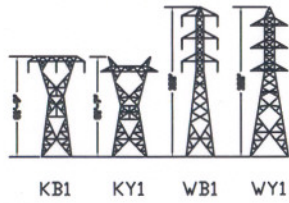
LEGEND

▲ Existing Substations	Existing Transmission Lines: 66 kV 220 kV 330 kV 500 kV 800 kV
USGS 1:24,000 Scale Topo Index	County Boundary
Preferred 220 kV Substation Location	State park lands
Alternative 220 kV Substation Location	Federal lands: Bureau of Indian Affairs Bureau of Land Management Bureau of Reclamation Department of Defense Forest Service FWS Fish and Wildlife Service
Preferred 800/220 kV route	Proposed Development
Preferred 220 kV route (2 parallel, single circuit lines)	Primary Road Local road Railroad
Alternative A 800/220 kV and Alternative 220 kV	
Alternative A 800/220 kV route	
Alternative B 800/220 kV route	
Alternative C 220 kV route	
Alternative 1 500/220 kV route	

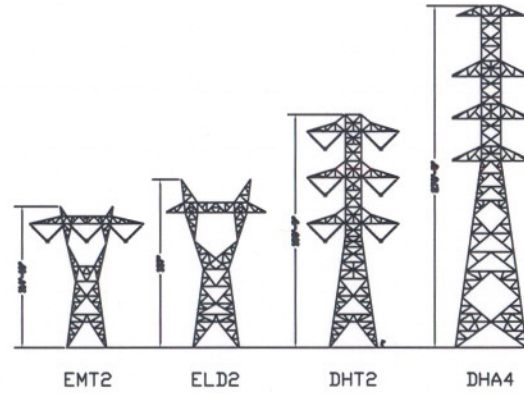
Source: Southern California Edison, POWERmap V4 Quarter 2002 release, California Resources Agency Legacy Project, Census 1990-2000 Data, P0101-01 & P0101-02 & P0101-03 (1990) & P0101-04 (2000) & P0101-05 (2000)



TRANSVERSE FACE



KB1 KY1 WB1 WY1



EMT2 ELD2 DHT2 DHA4



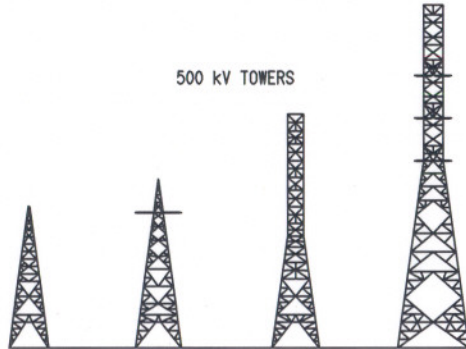
EMT5

220 kV TOWERS

LONGITUDINAL FACE



500 kV TOWERS



THIS DRAWING SHOWS THE POTENTIAL TOWER TYPES THAT MAY BE USED ON THE TECHACHAPI TRANSMISSION LINE PROJECT, BOTH 220KV AND 500KV. EACH TOWER TYPE IS SHOWN IN A PARTICULAR CONFIGURATION THAT CAN VARY IN HEIGHTS DRAMATICALLY. FOR EXAMPLE, AN EMT5 TOWER IS INCLUDED TO SHOW THE DIFFERENCE BETWEEN IT AND AN EMT2.

Civ AFFTC/XPX
<dwight.deakin@edwards.af.mil>

09/21/2004 10:25
AM

""Tracey.Alsobrook@sce.com""
<Tracey.Alsobrook@sce.com>

To

cc

Terry.Sciarrotta@sce.com,
James.Schaeffle@sce.com

Subject

RE: SCE Antelope Wind Power Route
Info

Tracey,
Got it - Thanks!!! We'll let you know if we have any issues reading the data and review the routes for potential impacts to our operations.

Respectfully,

Dwight

Dwight A. Deakin
Chair, Encroachment Prevention and Management Committee AFFTC/XPX 661
277-2412 Fax 277-8469 dwight.deakin@edwards.af.mil

-----Original Message-----

From: Tracey.Alsobrook@sce.com [mailto:Tracey.Alsobrook@sce.com]
Sent: Tuesday, September 21, 2004 10:05 AM
To: dwight.deakin@edwards.af.mil
Cc: Terry.Sciarrotta@sce.com; James.Schaeffle@sce.com
Subject: SCE Antelope Wind Power Route Info

Dwight,

Per our discussion this morning provided below are the proposed routes for our transmission lines to support increased generation of wind power in the region. The first attachment is the GIS layer with the proposed routes - if you have any problems with this data please contact Jim Schaeffle directly either via e-mail or at (626) 302-9885. The second attachment is an overall map of the proposed project, and the third attachment is an AutoCAD drawing of different tower designs.

The particular tower designs we'll be using (including heights in feet) are as follows: single-circuit 500 kV from Pardee Substation to Antelope Substation (suspension towers 115', dead-end towers 137') with a possible alternative being double-circuit 500 kV towers (tower heights up to 189')

out of Pardee Substation for a short distance ; Antelope Substation north to Cal Cement area single-circuit 500 kV (suspension towers 115', dead-end towers 137'); and single-circuit 220 kV from Cal Cement area to Monolith area (towers approx. 81').

(See attached file: quartermbuf_txml.zip) (See attached file: general_location_map_08-06-2004.jpg) (See attached file: tehach_towers.dwg)

Please let me know if there is any additional data/information that we can provide to assist in your evaluation.

Thanks, Tracey

Tracey Alsobrook
Biologist
Southern California Edison
Environmental Consulting Services; Environment, Health and Safety
(626) 302-7547
PAX 27547

Civ AFFTC/XPX
<dwight.deakin@edwards.af.mil>

10/06/2004 07:42
AM

""Tracey.Alsobrook@sce.com""
<Tracey.Alsobrook@sce.com>

To

cc

"Tony Parisi
(Anthony.Parisi@navy.mil)"
<Anthony.Parisi@navy.mil>

Subject

RE: SCE Antelope Wind Power Route
Info

Tracey,

We have received feedback from the major DOD players in the region, but are still awaiting a couple of others. We expect to get that soon. Do you have a date that you must have the response, or just as soon as possible? I apologize for the delay, but I assure you we are working it.

Respectfully,

Dwight

-----Original Message-----

From: Tracey.Alsobrook@sce.com [mailto:Tracey.Alsobrook@sce.com]
Sent: Thursday, September 30, 2004 2:47 PM
To: Deakin Dwight A Civ AFFTC/XPX
Subject: RE: SCE Antelope Wind Power Route Info

Hi Dwight,

Any idea on when we might hear back on the assessment of the routes? We would like to know as soon as possible if there are any potential conflicts so we can adjust our route (or tower designs) as necessary.

Thanks, Tracey

Tracey Alsobrook
Biologist
Southern California Edison
Environmental Consulting Services; Environment, Health and Safety
(626) 302-7547
PAX 27547

Deakin Dwight A



"Parisi, Tony NAVAIR"
<anthony.parisi@navy.mil>
10/07/2004 07:51 AM

To <Tracey.Alsobrook@sce.com>, "Deakin Dwight A Civ
AFFTC/XPX" <dwight.deakin@edwards.af.mil>
cc <Terry.Sciarrotta@sce.com>
bcc
Subject RE: SCE Antelope Wind Power Route Info

Tracey,

I'm working the issue and will have a response to you by the end of next week.

V/R,
Tony

Anthony M. Parisi, PE
Head, Sustainability Office
NAVAIR Range Department
(805) 989-9209
DSN: 351-9209
Cell: (805) 816-0935
FAX: (805) 989-1013
Anthony.Parisi@navy.mil

-----Original Message-----

From: Tracey.Alsobrook@sce.com [mailto:Tracey.Alsobrook@sce.com]
Sent: Wednesday, October 06, 2004 9:26
To: Deakin Dwight A Civ AFFTC/XPX
Cc: Parisi, Tony NAVAIR; Terry.Sciarrotta@sce.com
Subject: RE: SCE Antelope Wind Power Route Info

Dwight,

Thanks for the response. Unfortunately, we are on a very fast track on this project and must file our application (including our environmental document) with the CPUC in early December.

We would appreciate some feedback ASAP - especially if you can give us some heads up if we have issues. October 30th is our absolute drop dead date so any information you can get us before then would be most appreciated.

Thanks, Tracey

Tracey Alsobrook
Biologist
Southern California Edison
Environmental Consulting Services; Environment, Health and Safety
(626) 302-7547
PAX 27547

Deakin Dwight A




"Parisi, Tony NAVAIR"
<anthony.parisi@navy.mil>
10/26/2004 07:17 PM

To <Tracey.Alsobrook@sce.com>
"Deakin Dwight A Civ AFFTC/XPX"
cc <dwright.deakin@edwards.af.mil>,
<Terry.Sciarrotta@sce.com>

bcc

Subject RE: SCE Antelope Wind Power Route Info

History:  This message has been replied to.

Tracey,

We appreciate the opportunity to review the routing this early in the process.

The proposed transmission lines will not have significant impacts on the military mission in the area. We would like to stay involved as the planning process proceeds.

V/R,
Tony

Anthony M. Parisi, PE
Head, Sustainability Office
NAVAIR Range Department
(805) 989-9209
DSN: 351-9209
Cell: (805) 816-0935
FAX: (805) 989-1013
Anthony.Parisi@navy.mil

-----Original Message-----

From: Tracey.Alsobrook@sce.com [mailto:Tracey.Alsobrook@sce.com]
Sent: Thursday, October 07, 2004 8:09
To: Parisi, Tony NAVAIR
Cc: Deakin Dwight A Civ AFFTC/XPX; Terry.Sciarrotta@sce.com
Subject: RE: SCE Antelope Wind Power Route Info

Tony,

Thanks. That will help us immensely in our review of the project and potential conflicts.

Tracey

Tracey Alsobrook
Biologist
Southern California Edison
Environmental Consulting Services; Environment, Health and Safety
(626) 302-7547
PAX 27547